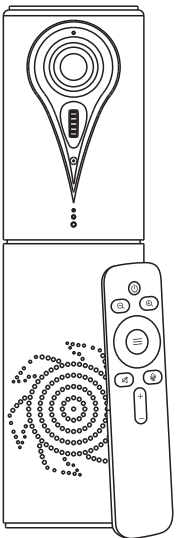


Portable All-in-One Video ConferenceCam User's Manual



(ENGLISH VERSION V032106)

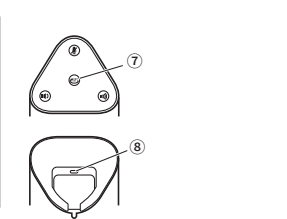
Please read this Manual before setting up camera, and stick to its requirement strictly. Suggest you keep this manual for further reference.

PRODUCT FUNCTION CHARACTERISTICS

The device integrates a HD Camera, microphone and speaker ideally suited to Web Video Conferencing Collaboration. Single USB Cable connection for HD Video with audio transition simultaneously and It's working plug and play. Compatible with most UC and web Conferencing applications like Skype, Zoom, WebEx, TrueConf, Starleaf, etc.

FUNCTIONAL DESCRIPTION

- ① Blue LED indicator for video ON/OFF
- ② HD wide view angle lens
- ③ Tilt movement wheel
- ④ Omni-directional microphone
- ⑤ Work status LEDs Indicator
- ⑥ Speaker
- ⑦ HiFi Mode
- ⑧ USB type-C interface



Work status introduction of touch buttons

Touch buttons	LED indicator color	Work status
Microphone Mute	Blue	Microphone working
	Red	Mute Microphone
HiFi Mode	Blue	Conference Interaction
	Green	HiFi mode for music playing
Volume Down		LED Indicator blinking while Volume down
Volume Up		LED indicator blinking while Volume UP

FUNCTION OPERATION INSTRUCTION

Web Conferencing Collaboration function operation
Working with WebRTC Application with USB Cable Connection, Plug and Play simply connect a laptop and start a meeting.

Video Display
To check video preview Option in the VC Software, and choose 1080p@30fps max. or 720p resolution according to the Bandwidth locally.

Speaker Volume UP/DOWN adjustment
During a Meeting if you need to adjust Volume UP or Down, just press the Button on top of unit or use the remote control.

Microphone Volume adjustment
During a meeting if you need to adjust Microphone Volume, first to adjust remote-end speaker output, and adjust the Mic Volume up/down in your VC Software.

Microphone Mute
Press "Mute" on top of device or on remote control during a meeting, and the LED indicator blinking Red color, then you can hear meeting at remote-end only, to press again the Mute button to recover conversation, and the LED indicator is Blue color during meeting.

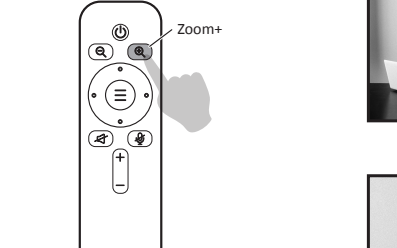
HiFi Mode for Music high-fidelity playing
Press HiFi button to playing music with high-fidelity quality, and the LED lights turn Green Color, and the Microphone function is disabled at HiFi Mode. If you need to start meeting Collaboration, just press HiFi button to switch to Meeting mode and microphone is available.

Tips:
When the device is connected to PC and playing music, please take off the music player before remove cables.

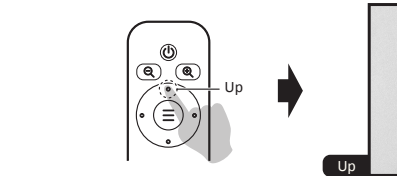
EPTZ

Portable conference camera supports EPTZ 3x digital zoom, while users zoom in the image, then can move Up/ Down / Left / Right of the image.

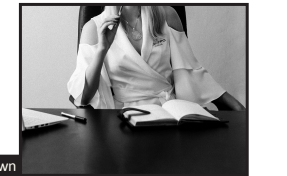
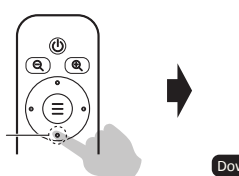
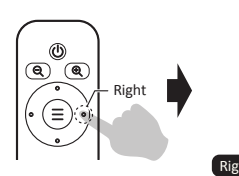
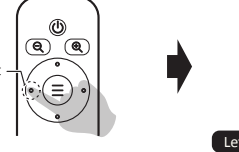
① Press Zoom+ on the remote control to zoom in image.



② After the image is zoomed in, press Up /Down / Left / Right to move pan and tilt to control EPTZ.



Left



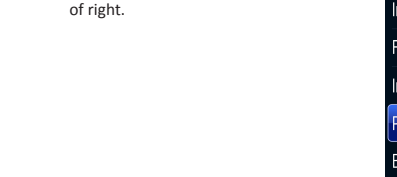
Picture in Picture (PIP)

Portable conference camera supports picture in picture function(PIP), while EPTZ zoom in close-up image, users still can see full-view image through overlay small picture.

① Press "Camera OSD Menu(Middle)",select "Image".



② Select "PIP" to "On", Picture in Picture function turns on, users can see small picture-in-picture window at the bottom of right.



Remote Control Functions

Buttons	Functions
1 Power	Turn ON/OFF Camera
2 Zoom out	ZOOM OUT
3 Zoom in	ZOOM IN
4 OSD menu	1. Camera OSD Menu (Middle) 2. EPTZ Control (Up, Down, left, right) 3. The menu button under the camera menu bar for confirmation selection and return to the upper level menu. The direction control Up and Down for the movement cursor, the direction control Left and Right to adjust the corresponding parameters. The change takes effect immediately, no need to press the confirmation key.
5 Microphone mute	Microphone mute
6 Speakerphone mute	Speakerphone mute
7 Volume Control	Volume up/down

! If the remote control doesn't work, it may be because the battery run out, please replace it with a new one (AAA*2pcs).

ACCESSORIES LIST

- ① Camera x1
- ② USB type-C cable x1
- ③ User's Manual x1
- ④ Remote control x1

OSD Menu

Press the OSD menu button[Middle]on the remote control to log in Image Setup as follow.Press again same button to log-off OSD Menu.



! Exposure

Brightness: Adjust image brightness Adjustable Value: 0-255; Default: 64
Backlight: Adjust the backlight Optional: Off / On; Default: Off
AE: Adjust the exposure settings Optional: Auto / Shutter; Default: Auto
Shutter: Shutter speed Optional: 1/10000-1/25; Default: 1/25
Flicker: Anti-flicker adjustment Optional: 50/60; Default: 50
Back: Back to previous menu

! Color
Hue: Adjust image hue Optional: 0-100; Default: 50
Saturation: Adjust image saturation Optional: 0-100; Default: 50
Sharpness: Adjust image sharpness Optional: 0-127; Default: 50
WB: Select white balance mode Optional: Auto/Manual; Default: Auto
Color Temp: Adjust color temperature Optional: 1500-15000; Default: 5000
Back: Back to previous menu

! Image
Image Flip: Mirror and rotate image Optional: Off/All/Flip/Mirror; Default: Off
Frame: Select image frame Optional 30/25; Default: 30
Image Mode: Select image style Optional Normal/Clear/Bright/Beauty Default: Normal

PIP: Picture in picture function, Optional: Off/On; when zoom in close-up image, still can see full-view image through overlay small picture.
Back: Back to previous menu
Default: Off

! Information
Version:Firmware version info.
Model: Camera model info.
Date: Firmware version date.
*The information may vary according to product updates.

! Language
OSD menu language.
OSD Mirror
Mirror On Screen Display menu.

! Restore Defaults
Restore camera parameters to default values.

- ! 1. No Pan/Tilt movement function while OSD Menu on screen.
- 2. Shutter can only be adjusted if it is selected as Shutter in the AE menu.

TROUBLESHOOTING

May you check below common trouble shooting issue before contact local dealers for repair, and it takes few steps to recognize your problem. If your problem or enquiries are not resolved please contact the local dealers for professional advice accordingly.

Problem	Possible Reason	Solution
Camera no power while connect to PC	The USB Cable is loose while device connected to PC USB Cable is too long which reduce power supply to device	Plug again the USB Cable to PC and double check Must use the USB Cable along with device in package
Microphone is not recognized by PC	Not chose the device as Microphone in the application settings Microphone is Mute	To set this device as Microphone input in your applicationsoftware Press Mute button to resume meeting
No Sound output	Not chose the device as Speaker output in the management settings	Set this device as Speaker output device in the applicationsoftware

TECHNICAL PARAMETERS

Model	Portable Conference Camera	
Image Sensor	Sensor	1/2.8" HD color CMOS
	Effective pixel	2.1 Megapixel
	Min. illumination	0.5 Lux at F2.0
	White balance	Auto
Lens	Focus	2.3mm
	Iris	Fixed
	HOV	105°
	Video output format	MJPEG: 1080P,720P,800*600, 640*360 YUV: 720P,360P H.264: 1080P,720P,800x600P,360P
OSD	Support	
PIP	Overlay small window to display full-view image	
EPTZ	Support EPTZ, 3x Digital Zoom	
Vertical rotation	Roller rotation -10°~ 10°	
Type	Full Duplex OMNI Directional Microphone	
Sensitivity	-28dBFS	
S/N ratio	61dB	
Frequency range	20Hz-15KHz	
Speaker	Built in powerful speaker,AGC provided excellent audio quality	
Echo cancellation	Advanced echo cancellation up to 256ms	
Noise suppression	>15dB	
Sampling rate	16KHz/48KHz	
Pickup range	Suggest to work in 3 meters distance	
Button functions	Mic mute, HiFi mode, Volume+, Volume-	
Status display	Three-color LED indicator lights	
Remote Control	Equipped with infrared remote control, control audio and video various functions	
UVC Protocol	Support	
Output interface	USB type-C, Plug and Play	
Work Temperature	0-50°C	
Humidity	0-95% RH	
L x W x H	74mm x 72mm x 272mm	
Weight	560g	